

Ferris&Co



£1,350 pcm

Holding deposit equivalent to 1 week's rent on application



4 Chapel Cottages Upper Street
Maidstone, ME17 1SW

TEL: 01622 737800
Email:
lettings@ferrisandco.net
www.ferrisandco.net

Westwood House
Thurnham Lane
Maidstone, Kent
ME14 4QZ

DESCRIPTION

A beautiful Grade II listed period cottage. Bursting with character features refurbished to a high standard with a stunning kitchen with a full range of integrated appliances. Luxurious bathroom with separate shower and bath. Delightful rural outlook. Gas central heating. Radiators. 40ft rear garden with off road parking.

ON THE GROUND FLOOR

LOUNGE 13' 9" x 9' 6" (4.19m x 2.89m)
2 built in storage cupboards. Recessed fireplace. Window to front. Eastern aspect. Beamed ceiling. Double radiator. Panelling to dado height. Carpet.

KITCHEN/DINING ROOM 19' 7" x 12' 9" (maximum)(5.96m x 3.88m)
Kitchen area New fitted kitchen with white door and drawer fronts with Escutcheon fittings. Complementary working surfaces and upstand. 4 burner electric hob, oven beneath, Enamel sink, stainless steel mixer. Integrated washing machine. Deep pan drawers. Wall mounted Worcester gas fired boiler supplying central heating and domestic hot water throughout. Wood laminate flooring. Recessed low voltage lighting. Dining Area Continuous wood laminate flooring, double radiator. Window overlooking rear garden. Door to garden. Stairs to first floor.

ON THE FIRST FLOOR

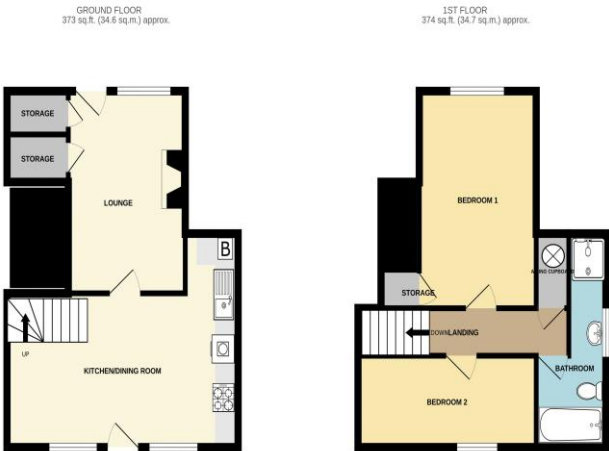
LANDING
Built in linen cupboard with lagged cylinder.

BEDROOM 1 15' 2" x 9' 9" (4.62m x 2.97m)
Heavily beamed with exposed timber panelling. Imposing Georgian fireplace, double radiator. Window to front. Views over farmland.

BEDROOM 2 13' 6" x 8' 2" (4.11m x 2.49m)
Window to rear. Views over farmland. Radiator.

BATHROOM
Just fitted new white contemporary suite with aqua board splashback. Mosaic tile finish. Panelled bath with mixer tap. Separate twin shower. Wash hand basin, low level W.C. Wood laminate flooring. Chromium plated heated towel rail.

OUTSIDE
40ft rear garden with off road parking.



DIRECTIONS
From our Bearsted office proceed in an easterly direction into The Green, passing The Village Green on the right hand side, a continuation of which is Roundwell. At the junction with the Ashford Road turn left. Upon reaching the first roundabout take the second exit, at the second roundabout take the second exit, at the third roundabout take the second exit, follow signs to Leeds Village. Pass the main Leeds Castle entrance, continue pass the church and The George public house, continue up the hill. The property will be found on the right hand side towards the end of The Village as indicated by our signboard.